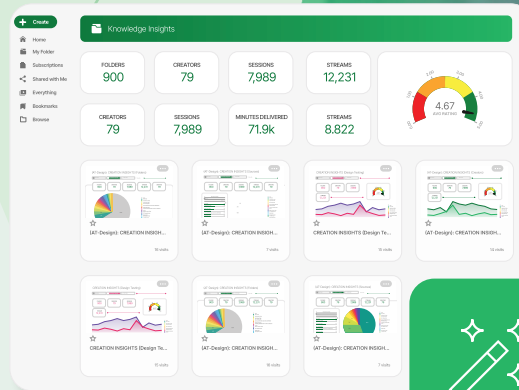


Turn Data into Action with Panopto Knowledge Insights

Get meaningful insights for your institution that measure learning outcomes, optimize instruction and update administrators with campus-wide alerts.



See your data, your way to optimize learning outcomes.

After making substantial investments in online learning programs and content libraries, educational institutions need advanced analytics to identify, assess, and monitor video learning deployments for success. Deeper and more timely analysis of engagement and usage data enables institutions to improve instructional design, measure effectiveness, optimize resources, and ultimately, enhance the learning experience.

Panopto Knowledge Insights for Higher Education delivers critical learning insights on demand with Key Performance Indicators (KPIs) and easy-to-interpret data visualizations. Spot patterns in usage, content, and engagement as you analyze month-over-month and year-over-year trends. Slice and dice data, set alerts, and run system reports from dashboards that turn data into action.

Get campus-wide data views.

Track and measure impact of platform usage, system performance, and content creators with interactive visualizations for easy comprehension. Distill the data you need to optimize learning with charts, graphs, and Key Performance Indicators (KPIs).

Alert administrators daily.

Never miss important changes in your Panopto storage capacity, system status, or KPIs when you set threshold alerts and notifications via email, Slack, SMS, or webhooks.

Spot trends that optimize instruction.

Spot instructional trends quickly, then dig deeper. Dynamic dashboards provide visibility into metrics that empower your instructors, from content creation, driving engagement, and more.

Easily share engagement insights.

Stay on top of month-over-month or year-over-year trends to track student support efforts or assess instructors with quickly exported data results in xls, csv, and png formats for easy distribution. Access standard CSV reports on-demand.

Configure data for institutional goals.

Slice and dice data the way you want to extract insights aligned with your learning goals, from instructional assessment to student retention efforts. Flexible filter and search capabilities help drive answers you need.

Schedule actionable reports.

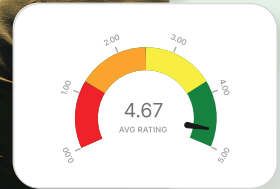
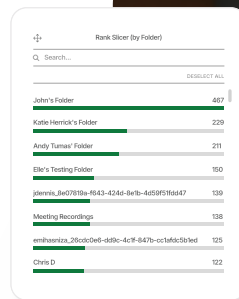
Set notifications to get automated standard reports delivered daily, weekly, or monthly to streamline interventions across your university, from system updates to academic support and technology adoption.

VISUALIZE. REFINE. ENGAGE.

Ensure Video Learning Makes the Grade

Empower your instructors.

Easily filter data to reveal your institution's most prolific and effective content contributors. See which instructors create the most content, from what source, and when, as well as total content views and pieces completed to measure impact. Uncover the effectiveness of course content and video learning modules.



Academics

Search all Sort by relevance

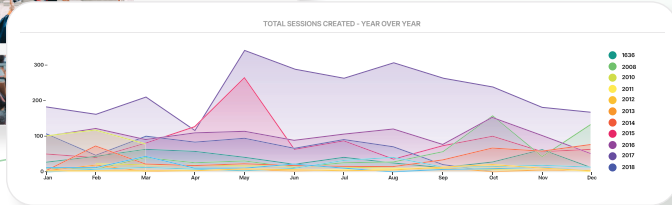
Success Strategies for Online Students: Staying Motivated and Engaged

Balancing Act: Managing Academics and Extracurriculars

Graduation Day Highlights: Celebrating Academic Achievements

Monitor lecture capture easily.

Track and monitor remote recorder health, updates, and usage statistics to stay on top of campus-wide lecture capture deployments.



Unlock the formula for student engagement.

Compare usage metrics and learner interactions with different instructional formats to determine what online students find most engaging. Use insights to implement best practices that will strengthen learning outcomes.

FOLDERS: 900

CREATORS: 79

SESSIONS: 7,989

STREAMS: 12,231

4.67 AVG RATING

Ellie's Testing Folder: 160

Meeting Recordings: 138



Want to connect? Visit panopto.com